

**KAPI'OLANI COMMUNITY COLLEGE
PROGRAM REVIEW**

**LIBERAL ARTS
2006**

Based on data for Fall 2003 through Spring 2006

Table of Contents

DESCRIPTION.....	1
GOALS.....	1
DATA	3
GRAPHS.....	4
ANALYSIS	5
Description of Data Elements.....	6
Appendix A: History and Admission Requirements	
Appendix B: Degree Requirements	
Appendix C: Faculty	
Appendix D: Advisory Committee	

**Kapi'olani Community College
Mission Statement 2003-2010**

Approved October 7, 2002 by KCC Faculty Senate

Kapi'olani Community College...

- is a gathering place where Hawai'i's cultural diversity is celebrated, championed and reflected in the students, faculty, staff, administration and curriculum.
- is a nurturing workplace of choice for strong and caring faculty, staff, and administrators committed to a shared vision and set of values.
- strives to be the first choice for education and training for Hawai'i's people.
- provides open access, and promotes students' progress, learning and success with low tuition and high quality instructional programs, student development and support services, and selective areas of excellence and emphasis.
- prepares students to meet rigorous baccalaureate requirements and personal enrichment goals by offering a high quality liberal arts program.
- prepares students to meet rigorous employment and career standards by offering 21st century career programs.
- prepares students for lives of ethical, responsible community involvement by offering opportunities for increased civic engagement.
- leads locally, nationally and internationally in the development of integrated international education through global collaborations.
- uses human, physical, technological and financial resources effectively and efficiently to achieve ambitious educational goals.
- builds partnerships within the University and with other educational, governmental, business, and non-profit organizations to support improved learning from preschool through college and lifelong.
- uses cycles of qualitative and quantitative assessment to document degrees of progress in achieving college goals and objectives.

Part I. Executive Summary of Program Status

This is the first report of the newly developed three-year program review. There are no recommendations from previous reports to discuss at this time.

Part II. Program Description

DESCRIPTION

This program is designed to provide students with an Associate in Arts degree and to prepare them for transfer to a baccalaureate degree program at a four-year college or university.

GOALS

The primary objectives of the Liberal Arts Program are to:

1. Prepare students for transfer to a baccalaureate degree program at a four-year college or university.
2. Offer an Associate in Arts degree.
3. Provide general education courses for students in vocational-technical programs, including the career programs offered by Arts and Sciences (A.S. in New Media Arts Exercise and Sport Science, Educational Paraprofessional, and Interpreting and the CA Biotechnician)
4. Provide a sequence of English courses that meet the liberal arts needs of non-native speaking students.

A more comprehensive statement of goals appears in the form of competencies students are expected to master.

For the rest of the Program Description, please see the Appendices.

Part III. Quantitative Indicators for Program Review

DATA
CREDIT
LIBERAL ARTS

Demand

Enrollment / Admission	F05	F04	F03
Number of majors	3,630	3,689	4,251
Number of new majors	1,624	1,600	1,938
Number of applicants	2,125	2,173	2,792
Number of FTE majors	3,462.83	3,393.58	3,535.25
Number of FTE faculty	129.67	127.87	127.40
Number of student semester hours	41,544	40,723	42,423

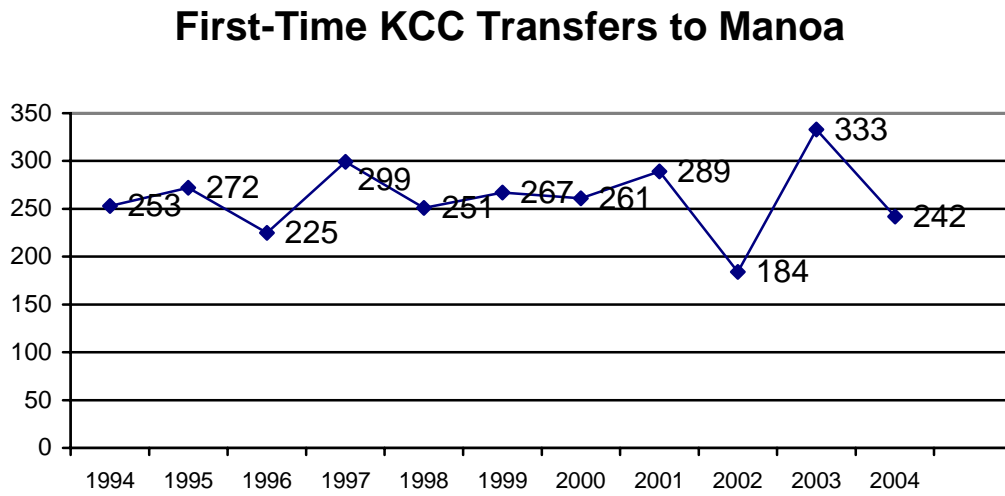
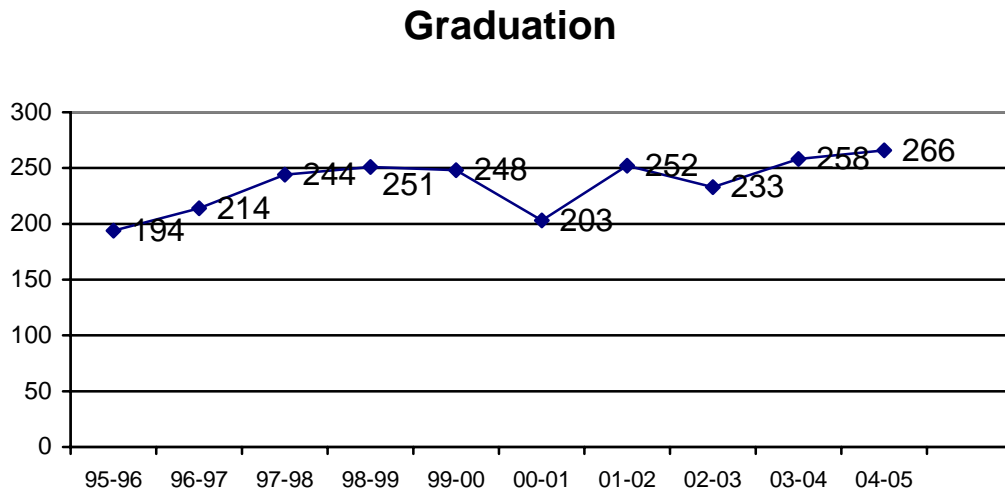
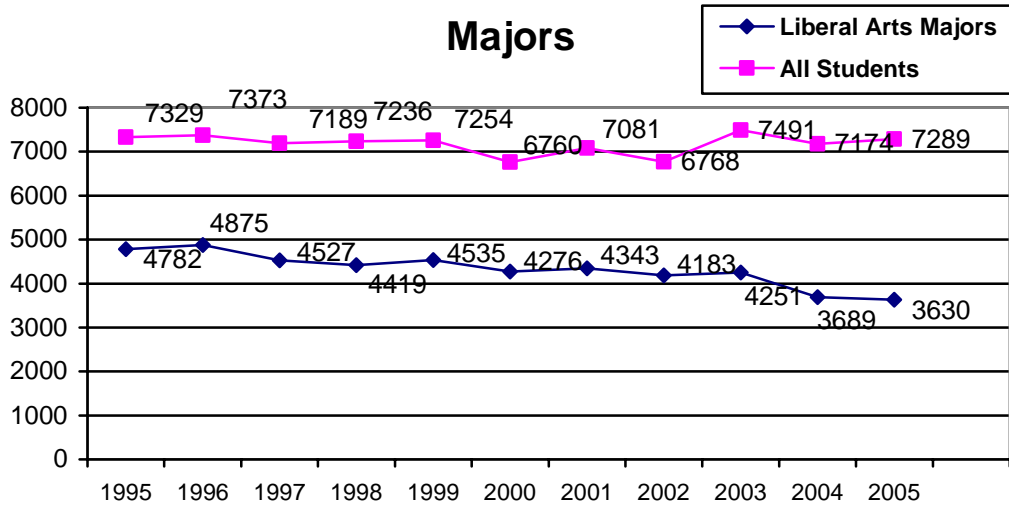
Effectiveness

Satisfaction	
Students	
Employers	

Program	04-05	03-04	02-03
Number of degrees awarded	266	258	233

Efficiency

Program	F05	F04	F03
FTE students per FTE faculty	26.70	26.54	27.75
Average class size	21.21	21.31	22.20
Occupancy rate	86.55%	86.63%	90.63%
Number of low-enrolled classes	45	37	21
Avg enrollment, low-enrolled classes	5.78	5.32	8.52



**More Data for Program Review
Liberal Arts**

Demand

Enrollment	AY '05 - '06	AY '04 - '05	AY '03 - '04
Semester Hours for Program Majors in All Program Classes	51,423	57,866	63,159
Student Semester Hours for All Program Classes	89,279	89,195	90,743
Number of Classes Taught			
LBRT-HUM	427	423	355
LBRT-LLL	460	451	504
LBRT-MS	428	454	416
LBRT-SSCI	182	177	179
Semester Hours Taught			
LBRT-HUM	1,227	1,228	1,013
LBRT-LLL	1,661	1,611	1,775
LBRT-MS	1,034	1,074	998
LBRT-SSCI	538	520	523

Effectiveness

Program	AY '05 - '06	AY '04 - '05	AY '03 - '04
Persistence of Majors (Fall to Spring)	66.96%	67.89%	66.33%

	Fall '04	Fall '03	Fall '02
Transfer Rates (for Fall Cohorts)	8.38%	14.09%	18.40%
Success at Another UH 4-Year Campus (for Fall Cohorts)	2.49	2.59	2.79

Efficiency

Program	AY '05 - '06	AY '04 - '05	AY '03 - '04
Semester Hours Taught by Lecturers			
LBRT-HUM	562	526	427
LBRT-LLL	702	616	739
LBRT-MS	422	400	347
LBRT-SSCI	222	232	194
Percent of Classes Taught by Lecturers			
LBRT-HUM	45.67%	43.03%	41.69%
LBRT-LLL	41.74%	36.14%	40.08%
LBRT-MS	42.76%	40.75%	36.78%
LBRT-SSCI	41.76%	45.20%	36.87%
FTE Workload			
LBRT-HUM	45.44	45.48	37.52
LBRT-LLL	61.52	59.67	65.74
LBRT-MS	38.30	39.78	36.96
LBRT-SSCI	19.93	19.26	19.37

Part IV. Curriculum Review and Revision

The Arts and Sciences Division currently has 407 courses listed in the catalogue. We would like to begin to place at least 37 of these in the inactive category to better reflect our routine offerings.

This year we continued updating all courses that are “5 years or older”. The Division has 175 courses that need review. The four Department Chairs have agreed to review 35 courses per year; thus, we should complete the review cycle by 2011-2012.

The departments will also review and revise courses as demand and need dictate.

2003-2004

ANTH	150	DNCE	132	HAW	224
ANTH	215	DNCE	150	HIST	151
ANTH	235	ED	260	HIST	152
ART	113	ED	285	HIST	231
ART	114	ED	286	HIST	232
ART	111	ED	287	HIST	252
ART	123	ED	294	HIST	284
ART	209	ENG	204	HIST	288
ART	213	ENG	206	HUM	269K
ART	214	ENG	214	HWST	107
ART	223	ENG	250	HWST	100
ART	224	ENG	251	ICS	241
ART	190	ENG	252	IT	101
ART	109	ENG	253	IT	102
ART	120	ENG	254	KOR	111
ART	201	ENG	255	KOR	112
ASAN	100	ENG	256	LLEA	239
ASL	101	ENG	257F	MATH	135
ASL	102	ENG	257G	MATH	140
ASL	201	ENG	257M	MATH	203
ASL	202	ENG	257Q	MATH	24
BIOL	103	ENG	257D	MATH	25
BIOL	103L	FSHE	110	MATH	50H
CHNS	111	FSHE	119	MATH	81
CHNS	112	FSHE	228	MUS	114
COM	201	FSHE	281	MUS	104
DEAF	101	FSHE	293C	MUS	106
DEAF	201	GEOG	101	MUS	107
DEAF	202	GEOG	101L	MUS	121B
DEAF	294	GEOG	102	MUS	122B
DNCE	131	GEOG	151	MUS	180

MUS 207
 MUS 221B
 MUS 231B
 MUS 253
 MUS 108
 MUS 121C
 MUS 122C
 PACS 273
 PHIL 100
 PHIL 102
 PHIL 250
 PHIL 110

PHIL 200
 PHYS 151
 PHYS 151L
 PHYS 152
 PHYS 152L
 PHYS 272
 PHYS 272L
 PSY 212
 PSY 170
 PSY 260
 REL 150
 REL 151

REL 210
 SP 233
 SP 181
 ZOOL 100
 ZOOL 101
 ZOOL 101L
 ZOOL 141
 ZOOL 141L
 ZOOL 142
 ZOOL 142L

2004-2005

AMST 201
 AMST 202
 AMST 211
 ART 112
 ART 115
 ART 120
 ART 125
 ART 126
 ART 127
 ART 128
 ART 129
 ART 155

ART 156
 ART 157
 ART 158
 ART 159
 ART 195
 ART 202
 ART 212
 ART 222
 ART 226
 ART 229
 ART 246
 ART 247

ART 248
 ART 249
 ART 256
 ART 257
 ART 258
 ART 293
 ART 294
 ART 296
 BIOTECH CA
 ENG 229
 MATH 203

2005-2006

ART 116
 ART 152
 ART 202
 ART 266
 ART 293V
 BIOL 275
 BIOL 275L
 BOT 201
 BOT 201L

CHN 290
 ECON 101 (deletion)
 JPNS 290
 KOR 290
 MICR 240
 MUS 121Z
 PHIL 211
 PHIL 213
 REL 220

SOC 100
 SOC 214
 SOC 218
 SOC 231
 SOC 251
 SOC 257
 SSCI 120 (deletion)
 THEA 221
 THEA 240

Part V. Analysis of Program

The Liberal Arts Program as represented by the Arts and Sciences Division remains healthy, vigorous and committed to providing excellence in the classroom for every student regardless of program or career aspirations. The Arts and Sciences unit is comprised of four separate departments: Arts and Humanities; Languages, Linguistics and Literature; Math and Sciences; and Social Sciences. These four departments offer over 89,000 student semester hours per year. This represents 71% of the institution's total offerings. As a degree program that has no admission requirements, we are uniquely challenged in our data analysis as many of our "majors" are in Liberal Arts by default. As an example, we offer 48 sections of Zoology 141 and 142 plus labs every semester. These gateway classes for nursing and health programs enroll 800 or more students intending to be nursing/health majors. In many ways the "Liberal Arts" designation is just that—a classification rather than a declaration of a major.

Despite these challenges, our program indicators remain healthy. The numbers of graduates increased by 10.73%. Although there was a slight dip for new applicants and majors from 03-05, the number of FTE majors dropped by only 72.42 credits, which represents a 2.2% decline. Students designated as LBART majors are, however, taking more credits: 11.44 SSH/student in Fall 05 compared to 9.97 SSH in Fall 03. This increase may be attributed to the shift in population counted in the LBART category. Prior to Banner's systemwide implementation in Fall 2003, students were required to enroll at each campus that they wanted to attend; many of the non-KCC-homebased students chose to enroll as LBART majors. Now, students need not enroll at each campus and the population of LBART majors is decreasing as the number of unclassified and non-KCC-homebased students is increasing: from 563 (7.5%) and 1,052 (14%), respectively (out of 7,491) in Fall 2003 to 923 (12.6%) and 1,284 (17.6%) (out of 7,289) in Fall 05 (MAPS enrollment report).

As with demand, the area of efficiency has also seen a small decline, yet other factors contradict these indicators. A look "inside" the numbers shows the decline in average class size at only .99 students per class; the average occupancy rate over three years is 87.72% (one of the highest rates in the institution) and the FTE student to FTE faculty ratio for Liberal Arts is 27-1, the highest and most efficient in the institution. The small

class report data is also not accurate in so far as many courses that enroll fewer than 10 students are piggybacked, i.e. taught at the same time by the same instructor. Others are ACE or honors sections of existing classes. According to the “small class” report submitted to the UH system office, where the data are “cleaned up,” Arts & Sciences actually had only 29 classes with fewer than 10 students (five of which were courses for A.S. degree programs (ESS and Interpreting) and three of which were funded by the Freeman grant).

If there is a significant problem in the program that is highlighted by recent data, it is the drop in our transfer rate and the decline in GPA once students have transferred. Informal data suggest we are just beginning to see the ramifications of UHM’s General Education Core reform. Why and how it is slowing down transfer is unknown. It may be that articulation issues have again become roadblocks for our students. In response to the situation we are re-visiting our tactical plan and directing our Student Success Team to examine and recommend steps to alleviate the problem. We have asked them to work closely with the Institutional Research Office to gather the most pertinent data.

As part of our service to the College, the other programs and our commitment to new emerging programs such as New Media Arts, Exercise and Sport Science, Educational Paraprofessionals, Interpreting and Music Training we offer more than 30 courses with enrollments of 10 or fewer. There also are three art courses capped at 10; Art 293V Internship, Art 294 New Media Arts Practicum and Art 260 Gallery and Exhibit Design. In addition two other New Media Arts “capstone” courses Art 295 Design Portfolio and Art 296 Demonstration Reel Production are for those students who are about to graduate and rarely exceed 10 students a semester. These factors contribute to skewed numbers in low-enrolled sections. Despite these constraints these courses place on our program, we remain efficient, in demand by our student population and committed to their educational excellence.

Appendix Data Elements

Demand

Enrollment/Admission

Number of Majors -- The number of students who are accepted as majors into the program during [Fall 2004](#) as of [March 2005](#).

Source: [SCT Datamart](#)

Number of New Majors -- The number of new students who are registered for 1 semester hour or more and who have been accepted into the program during [Fall 2004](#) plus the number of continuing students who are registered for 1 semester hour or more and who change their major to this one as of [March 2005](#).

Source: [SCT Datamart](#)

Number of Applicants -- The number of new students selecting this major on the common application form plus the number of continuing students who change their major to this one for consideration for [Fall 2004](#) as of [March 2005](#).

Source: [SCT Datamart](#)

Number of FTE Majors -- The number of the total student semester hours in this program during [Fall 2004](#) as of [March 2005](#) divided by 12.

Source: [SCT Datamart](#)

Number of FTE Faculty -- The number of course-semester hours taught in this program divided by 15 during [Fall 2004](#) as of [March 2005](#).

Source: [SCT Datamart](#)

Number of Student Semester Hours (SSH) -- The sum of semester hours taken by all students who are majors of this program in all regular credit courses during [Fall 2004](#) as of [March 2005](#).

Source: [SCT Datamart](#)

Effectiveness

Satisfaction Surveys

Students: On a scale of 1 to 4 with 4 being the highest, the mean for the issue of overall satisfaction with the program, based on a survey conducted by the Office of Planning & Institutional Research and the Career Personal Development Unit.

Source: [2001 Graduate-Student Survey](#)

Employer: On a scale of 1 to 4 with 4 being the highest on the item dealing with overall performance.

Source: Department Surveys

Program

Number of Degrees Awarded -- The total number of degrees and certificates awarded to students of this program during the academic year [2003-2004](#).

Source: Prior data: [SCT Datamart](#)

Current data: [MAPS Reports](#)

Transfer Rate -- The number of Liberal Arts majors who transferred to Manoa during [Fall 2004](#) divided by the total number of Liberal Arts majors during [Fall 2004](#).

Source: [SCT Datamart](#)

First-Time KCC Transfers to Manoa -- The number of Liberal Arts majors who enrolled for the first-time at Manoa during [Fall 2004](#).

Source: Prior data: [UH Manoa Records](#)

Current data: [SCT Datamart](#)

Efficiency

FTE Students per FTE Faculty -- The number of the total student-semester hours (numerator) divided by 12 as of [March 2005](#) over the number of course-semester hours offered in the program (denominator) divided by 15 as of [March 2005](#).

Source: FTE Students: [SCT Datamart](#)
FTE Faculty: Prior data: [SCT Datamart](#)

Average Class Size -- The sum of the number of students registered in each program course divided by the number of courses offered in the program as of [March 2005](#).

Source: [SCT Datamart](#)

Occupancy Rate -- The total number of students registered in each program course divided by the sum of the number of openings for these courses as of [March 2005](#). For these indicators, the upper and lower cutoff points are set at 80% and 65% universally.

Source: [SCT Datamart](#)

Number of Low-enrolled classes -- The number of Liberal Arts classes with enrollment equal to or less than 10 students during [March 2005](#).

Source: [SCT Datamart](#)

Appendix A:
History and Admission Requirements
HISTORY

The Arts and Sciences program at Kapi'olani Community College was introduced in 1965 when Kapi'olani Technical School was converted to Kapi'olani Community College. Departments within the Arts and Sciences program first underwent "program review by external observers in the Fall 1971." Regular program reviews for Humanities, Math/Science, Social Science and Language Arts have been conducted since 1974.

Over the past five years, the Arts and Sciences program has initiated several significant changes.

1. The number of course offerings in some disciplines has increased as new degree programs (New Media Arts and Exercise and Sports Science) have been approved and as student demand has warranted (Zoology, ASL, Art, Hawaiian Studies and Spanish, for instance). The variety of courses has also been enriched, new courses alternating with existing courses in the semester offerings.
2. The Arts and Sciences program has incorporated all the College's cross-curricular emphasis into course offerings: Writing across the Curriculum+ , Information Technology (KITE), integrated international education and globalization (IIEG, including KAPE, the Asia Pacific Emphasis) and Service-Learning.
3. To facilitate Liberal Arts students' acquisition of an A.A. degree before transferring to UH Manoa, Kapi'olani Community College's A.A. degree program was revised to be more in concert with the general education core requirements of UH Manoa. Effective Fall 2003, KCC's new A.A. degree closely mirrors UHM's General Education Core in its structure and requirements.
4. Pre-professional programs, needed support courses, and academic advising have been developed and implemented for students who elect into pre-psychology, pre-business, pre-art, and pre-education. A counselor has been funded to work with NMA and ESS students.

At the same time that it has been expanding and improving course offerings, the Arts and Sciences program has maintained its commitment to providing high quality competency-based instruction for underprepared, vocational, as well as A.A. degree, and transfer students.

ADMISSION REQUIREMENTS

Kapi'olani Community College is an open-door college that welcomes any person 18 years of age or older. The UH Common Admission Application form and pertinent instructions are available at the Office of Admissions and Information Services or in the counseling offices of any high school in Hawaii. A completed application form, residency information form, and other documents requested by the college must be submitted to the Office of Admissions by July 1 for the Fall semester, November 1 for the Spring semester, or May 1 for the Summer session.

Appendix B: DEGREE REQUIREMENTS

ASSOCIATE IN ARTS (A.A.) DEGREE IN LIBERAL ARTS

60 credits minimum of 100-200 level courses; 2.0 grade point ratio (GPR) minimum

General Education Requirements (22 - 24 credits)

KCC AA/FW	ENG 100, ESL 100	3	
KCC AA/FS	BUS 100, ICS 141, 241, MATH 100, 100H, 103, 111, 115, 135, 140, 203, 205, 206, PHIL 110	3-4	
KCC AA/FG	A.A. Global and Multicultural Perspectives Electives (Two courses, each course from a different group: A, B, or C)		
Group A	(ANTH 151, HIST 151);		
Group B	(ANTH 152, GEOG 102, HIST 152);		
Group C	(GEOG 151, MUS 107, REL 150)	6	
KCC AA/OC	SP 151, 181, 200, 231, 251, 253, THEA 221, 222, 240		3
KCC AA/HSL	ASL 101, CHNS 101, 111, FIL 101, FR 101, HAW 101, JPNS 100, 101, KOR 101, 111, RUS 101, SAM 101, SPAN 101,	4	
KCC AA/HSL	ASL 102, CHNS 102, 112, FIL 102, FR 102, HAW 102, JPNS 102, KOR 102, 112, RUS 102, SAM 102, SPAN 101,	4	

Arts and Humanities Courses (6 credits)

(Two courses, each course from a different group: DA, DH, or DL)

	KCC AA/DA, DH, DL		
DA (The Arts)	ART 101, 105, 106, 107, 111, 112, 113, 114, 115, 123, 125, 126, 127, 128, 129, 155, 156, 157, 158, 159, 189, 191, 192, 195, 201, 202, 207, 209, 212, 213, 214, 222, 223, 224, 225, 226, 229, 243, 244, 245, 246, 247, 248, 249, 253, 256, 257, 258, 259, 260, 269, 288, 289, DNCE 121, 122, 131, 132, 150, 212, 213, ENG 204, 206, MUS 104, 108, 114, 121B, 121C, 121D, 121Z, 122B, 122C, 122D, 180, 183, 201, 206, 221B, 221C, 221D, 222C, 229, 230, 231B, 231C, 231G, 231M, 253, SP 145, 151, 200, 231, 233, 251, 253 THEA 101, 221, 222, 240		
DH (Humanities)	AMST 201, 202, ART 190, 270, 273, 280, 290, ASAN 273, CHNS 131, HWST 100, 107, 210, 216, HIST 222, 231, 232, 241, 242, 252, 281, 282, 284, 288, HUM 269, JPNS 131, 132, LING 102, MUS 106, 207, PHIL 100, 101, 102, 211, 213, 250, REL 151, 200, 201, 202, 209, 210, 222		
DL (Literature and Language)	EALL 261, 262, 269, 271, 272, ENG 200, 209, 214, 215, 225, 227, 250, 251, 252, 253, 254, 255, 256, 257, 257B, 257C,		

257F, 257G, 257M, 257N, 257P, 257Q,
 EL 263, HAW 261, 262, HWST 270,
 JOUR 205, 227, LLEA 239, 260,
 PACS 257 (ENG 257C), 273

6

Natural Sciences Courses (7 - 9 credits)

(Two semester courses. At least one lecture course each must be chosen from DB and DP.)

One of the two lecture courses

must also have a paired laboratory course.

KCC AA/DB	DB (Biological Sciences) ANTH 215, BIOL 101, 103, 120, 130, 171, 172, 275, BOT 101, 130, ESS 100, FSHE 185, MICR 130, 135, 230, PHYL 160, PSY 230, SCI 124, ZOOL 100, 101, 141, 142, 200	3-4
KCC AA/DP	DP (Physical Sciences) ASTR 110, 280, BIOC 241, 244, CHEM 100, 151, 152, 161, 162, 272, 273, CE 270, 271, EE 211, 260, GEOG 101, GG 103, OCN 201, PHYS 100, 122, 151, 152, 170, 272, 274	3
KCC AA/DY	DY (Laboratory) BIOL 101L, 103L, 130L, 171L, 172L, 275L, BOT 101L, 130L, CHEM 151L, 152L, 161L, 162L, 272L, 273L, GEOG 101L, GG 101L, MICR 140, 240, PHYS 100L, 122L, 151L, 152L, 170L, 272L, SCI 124L, ZOOL 141L, 142L, 200L, ZOOL 101L	1-2

Social Sciences Courses (6 credits) (Two semester courses from two different disciplines)

KCC AA/DS	DS (Social Sciences) AMST 211, 212, ANTH 150, 200, 210, 235, ASAN 100, BOT 105, COM 201, ECON 120, 130, 131, FAMR 230, JOUR 150, PACS 108 POLS 110, 120, 130, 171, 270, PSY 100, 170, 202, 212, 240, 260, 270, SP 181, SSCI 200, 260, SOCS 225, SOC 100, 214, 218, 231, 251, 257, WS 202 (PSY 202)	6
-----------	--	---

Elective Courses (18 credits) (A minimum of 18 credits of electives in

Liberal Arts courses numbered at or above the 100 level or non-Liberal Arts courses that meet major requirements.

Students are encouraged to meet with the appropriate academic advisor to obtain a listing of approved elective courses.

Hawaiian/second language courses at the 201 and 202 level meet the A.A. elective requirements.) Depending on students' intended major, certain non-Liberal Arts courses such as ACC 201, 202; CE 113, 270, 271; BLAW 200; EE 160, 211, 260; FSHE 101; ICS 101, 111, 211, 212; PHRM 203 may be included.

WRITING-INTENSIVE REQUIREMENTS – “WI” (2 COURSES)

HAWAIIAN, ASIAN, AND PACIFIC ISSUES – “H” (1 COURSE)

TOTAL

minimum 60

Appendix C:
FACULTY
as of Fall 2005

COUNSELING

Teri Durland, B.A., New
Media Arts Counselor, Instructor,
Untenured

Jodi Kunimoto, M.Ed., Arts &
Sciences Counselor, Assistant
Professor, Tenured (on leave)

Sharon Rota, M.A., M.Ed.,
Arts & Sciences Counselor,
Professor, Tenured

Kristie Malterre, M.Ed., Arts
& Sciences Counselor, Assistant
Professor, Tenured

Sheldon Tawata, M.S., Arts
& Sciences Counselor, Instructor,
Untenured

Linda McQuain, M.Ed. Arts
& Sciences Counselor, Instructor,
temporary

Faculty -- Humanities

David Behlke, M.F.A.,
Assistant Professor, Tenured

Sarah Bremser, M.A.,
Assistant Professor, Tenured

Chris Gargiulo M.F.A.
Instructor, Untenured

Brian Cassity, M.A.,
Associate Professor, Tenured

Anne Craig, M.Mus,
Assistant Professor, Tenured

Eric Denton, M.A
Assistant Professor, Tenured
Kauka DeSilva, M.F.A.,
Professor, Tenured

Lina Doo, M., Mus.,
Instructor, Untenured

Jan Hathaway, M.F.A.,
Instructor, Untenured,

Colette Higgins, M.A.,
Assistant Professor, tenured

Robin Fujikawa, Ph.D.,
Professor, Tenured

Monomita Krishna, M.A.,
Assistant Professor, Tenured

Keala Losch, Instructor,
Untenured

Sandra Perez, M.A.,
Professor, Tenured

Sharon Rowe, Ph.D.,
Assistant Professor, Untenured

Cheryl Souza, M.A.,
Assistant Professor, Tenured

Sharon Sussman, M.F.A.,
Instructor, Untenured

Joseph Tremont, M.F.A.,
Instructor, Untenured

Erin Weston, M.A.,
Instructor, Untenured

Robert Johnson, M.A.,
Ph.D., Professor, Tenured

Keith Kashiwada, M.A.,
Professor, Tenured

Linda Letta, M.A., Assistant
Professor, tenured

Barbara Norfleet, MA,
Assistant Professor, Untenured

Charlotte Toguchi, M.A.,
Professor, Tenured
Julie Rancillio, Ph.D.
Instructor, Untenured
Carl Jennings, M.F.A.
Instructor, Untenured.

ON LEAVE OR REASSIGNED

John Cole, M.A., Ph.D.,
Assistant Professor, Tenured
Violet Murakami, M.F.A.,
Assistant Professor, Untenured
Pierre Asselin, Ph.D.,
Assistant Professor, Untenured

**Faculty – Languages,
Linguistics and Literature**

Ami Tsuji-Jones, M.A.
Instructor, Untenured
Ann Ching, M.A., Assistant
Professor, Tenured
Carol Beresivsky, M.A.,
Professor, Tenured
Catherine Primavera, M.A.,
Assistant Professor, tenured
David Napoleon, B.A.,
Assistant Professor, Tenured
Davin Kubota, M.A.,
Instructor, Untenured
Elaina Malm, M.A., Assistant
Professor, Untenured
Francisco Acoba, M.A.,
Instructor, Untenured
Frank Noji, M.A., Professor,
Tenured
Gail Harada, M.A., Associate
Professor, Tenured
Guy Kellogg, M.A., Assistant
Professor, Untenured

Iwalani Tasaka, B.A.,
Instructor, Untenured
James Robinson, M.A.,
Ph.D., Associate Professor,
Tenured
James Shimabukuro, M.Ed.,
Ed.D., Associate Professor,
Tenured
Jan Fried, M.A., Associate
Professor, Tenured
Jody Yamamoto, M.A.,
Instructor, Untenured
Judith Kirkpatrick, M.A.T.,
Professor, Tenured
Kealii Salvador, Instructor,
Untenured
Kris Lambert, M.A.,
Assistant Professor, Untenured
Leigh Dooley, M.A.,
Associate Professor, Tenured
Linda Fujikawa, M.A.,
Assistant Professor, Tenured
Lisa Kanae, MA, Instructor,
Untenured
Lisa Kobuke, M.A.,
Instructor, Untenured
Mark Lawhorn, Assistant
Professor, Untenured
Maureen Bogdanowicz,
M.A., Ph.D., Professor, Tenured
McDunn Dustin, Instructor,
Untenured
Renita Cole, M.A., Assistant
Professor, Untenured
Satoru Shinagawa, M.A.,
Associate Professor, Tenured
Sheldon Hershnow, Ph.D.,
Professor, Tenured
Sooah Yuen, Ph.D.
Assistant Professor, Untenured

Sue Fujitani, Ph.D.,
Associate Professor, tenured
Susan Inouye, Ph.D.,
Assistant Professor, Tenured
Thomas Kondo, M.A.,
Associate Professor, Tenured
Wight, Elizabeth Kahi, M.A.
Associate Professor, Untenured
Yukio Kataoka, M.A.,
Assistant Professor, Tenured

ON LEAVE OR REASSIGNED

Yukiyasu Ishigami, M.A.,
Associate Professor, Tenured (On
Leave)
Jill Makagon, M.A.,
Associate Professor, Tenured
(Reassigned to Holomua)
Guy Nishimoto, M.A.
Professor, Tenured (Reassigned)
Louise Pagotto, M.A., Ph.D.,
Assistant Professor, Tenured
(Reassigned)
Dennis Kawaharada, M.A.,
Ph.D., Associate Professor,
(Reassigned)

**Faculty -- Mathematics and
Sciences**

Robert Allis, M.A., Assistant
Professor, Tenured
Andrew Astromoff, Ph.D.,
Assistant Professor, Tenured
Maria Bautista, M.S., Ph.D.,
Professor, Tenured
Mary Beard, M.A., Instructor,
Untenured
John Berestecky, Ph.D.,
Professor, Tenured

Kyong Soo Chung, Ph.D.,
Professor, Tenured
Herve Collin, M.S.,
Instructor, Untenured
Douglas Crowell, M.S.,
Instructor, Untenured
Charles Daniels, M.S.,
Professor, Tenured
Harry Davis, Ph.D.,
Professor, Tenured
Ronald Dunn, Ph.D.,
Associate Professor, Tenured
Stephen Gallo, M.S.,
Instructor, Untenured
Charles Matsuda, M.S.,
M.Ed., Professor, Tenured
Robert Moeng, Ph.D.,
Instructor, Untenured
John Mowbray, M.A.,
Professor, Tenured
Andrew Pak, M.A.,
Professor, Tenured
Naresh Pandya, Ph.D.,
Instructor, untenured
Antonio Pizarro, Ph.D.,
Assistant Professor, Tenured
Nelda Quensell, M.S.,
Professor, Tenured
John Rand, Ph.D, Professor,
Tenured
Robert Snider, M.S.,
Instructor, Untenured
John Uno, Ph.D., Professor,
Tenured
Don Voyce, M.S., M.B.A.,
Professor, Tenured
Lane Yoder, Ph.D., Assistant
Professor, Tenured

Faculty -- Social Sciences

Rosiana Azman, Ph.D.,
Instructor, Untenured

Candice Branson, M.A.,
Instructor, Untenured

Julia Compton, Ph.D.,
Instructor, Untenured

Ibrahim Dik, Ph.D.,
Professor, Tenured

Carl Hefner, Ph.D., Assistant
Professor, Untenured

Robin C. Mann, M.A.,
Associate Professor, Tenured

Neghin Modavi, Ph.D.,
Associate Professor, Tenured

Dennis Nullet, Ph.D.,
Instructor, Untenured

Veronica Ogata, Ph.D.,
Instructor, Untenured

Joseph Overton, Ph.D.,
Instructor, Untenured

Judith T. Renner, Ph.D.,
Associate Professor, Tenured

Barbara Ross, M.A.,
Associate Professor, Tenured

ON LEAVE OR REASSIGNED

Robert Franco, Ph.D.,
Professor, Tenured (Reassigned)

Lecturers -- Humanities

Patricia Alvarez
Adella Buss
Sean Browne
Maureen Chun
Ailed Garcia
Lina Doo
Deborah Forbis
Achilles Gacis
Leimomi Ho
Arthur Harvey
Karen Jones
Kaeo Kaleoaloha
Kloe Kang

Kapulani Landgraf
Andrew McCullough
Steven Niles
Stuart Nago
Liz Nakoa
Chuck Souza
Tom Stone
Russell Sunabe
Kyle Takaki
Karen Mead
Shuzo Uemoto

Mimi Wisnosky

Lecturers -- Languages, Linguistics and Literature

Michelle Bell
Renee Arnold
Roy Balantac
Jeremiah Boydston
Cathie Lynn Collier
Cortiguera Fernand
Coryell Judith
Charlotte Daspit
Shawn Ford
Roderick Gammon
Tom Gullikson
Yukie Hackler
Hui-Mei Chang
Dale Bardley
Kaeo Kaleo
Haidan Wang
Linde Keil
Susan Kroe-Unabia

Gunnel Lamb-Tamura
Linda Lambrecht
Clemen Montero
Phoenix Lundstrom
David McGuire
Julie Mowrer
Ari Nagai
Brian Rugen
Georgann Nordstrom
Dawn Oshiro
Aki Teshigahara
William Quillian
Anthony Silva
Carolyn Skinner
Dagmar Sundberg
Shuhui Su
Tonouchi Lee
Alfonso Treskow
Yuko Uchida

Lecturers -- Mathematics and Science

Tim Brilliance
Daniel Chung
Jeff Hall
Roger Kadala
Rosemarie McElhaney
Jennifer Morita
Larry Fee
Nasir Gazdar
Nicolle Kerr
Milton Cha

Teena Michael
Michelle Smith
Virendra Nayyar
Ada Tomosada
David Chong
Jeff Squires
Donna Lee
Cynthia Rajani
Kristen Joachimides

Lecturers -- Social Science

Barbara Briscoe
Irv Cohen
Joseph Coppinger
Kalani Fujiwara
Richard Hotton
Vicky Chiu -Irion
Ulla Hasager

Greg Mc Donald
Leslie McLees
Richard Miller
Keith Pedro
Vincent Pollard
Anthony Vilela
Forrest Young

**Appendix D:
ADVISORY COMMITTEES
2004-2005**

ART ADVISORY COMMITTEE

Pamela Andelin

Artist and Community
Representative

Meleanna Aluli Meyer

Artist and Arts Educator

Jacqueline Chun

Artist and Community
Representative

Jennifer Saville

Curator of Western Art and
Community Representative

Lucille Cooper

Artist and Community
Representative

Laura Smith

Artist and Arts Administrator

Linda Hutchenson

Artist and Community
Representative
Art Advisory Board Chair

Ryan Uesato

Multimedia Specialist

Georgiana Lagoria

Contemporary Museum Director
and
Community Representative

Rianna Williams

Community Representative

Rodney Mederios

Art Collector and Community
Representative

NEW MEDIA ARTS ADVISORY

Community Representatives

Karen Anderson

Malcolm Mearu

Starrtech Interactive

Science & Technology
International

Alvin Asai
Konami

Roy Sato
Square

Mike Balmes
Six D

Jason Suapaia
Pacific Focus

Sithiporn Keller
Revacomm

SERVICE LEARNING ADVISORY COMMITTEE

Mary Matayoshi
Director of State Volunteer
Services, Office of the Governor

Joan Naguwa
Director, Helping Hands Hawai'i,
Voluntary Action Center

Kathy Takemoto
Hawai'i Housing Authority, Palolo
Homes

SERVICE LEARNING FOR TOTAL HEALTH/HIV PREVENTION

George Harris
Executive Director, Pacificare

Nancy Partika
John Burns School of Medicine, UH
Manoa

Nancy Kern
HIV/STD Prevention Coordinator

Hawai'i Department of Health

Kim Gallant
Outreach Coordinator, Waikiki
Health Center

Joan Naguwa
Director, Helping Hands Hawai'i

HAWAI'I WRITING PROJECT

Sheldon Hershinow
Director, Kapiolani Community
College

Joy Marsella
Executive Director, UH Manoa

Edna Hussey
Co-Director, UH Manoa

Hope Espinda
Pohakea Elementary School

Lori Gomez
Maui District Office, DOE

Lorna Hershinow
UH Manoa

Gail Lee
Co-Director, Mililani High School

Mary Patricia Leahey
Campbell High School

Mark Murdock
Kalaheo High School

Joan Toledo
Hilo Union Elementary

Lani Uyeno
Leeward Community College

Merie Yoshida
Hilo High School